

CAN Driver for DIAdem

Driver Software for DIAdem

DIAdem is a commercial software package for use on standard desktop PCs and laptops. It can be used wherever measurement and analysis data accumulates.

The CAN Driver particularly for DIAdem allows you to record CAN signals with DIAdem that are defined in a Vector CAN database (CANdb++).

The following CAN hardware interfaces are supported:

- > CANcardXL
- > CANcaseXL
- > CANcaseXL log
- > CANboardXL
- > CANboardXL PCIe
- > CANboardXL pxi
- > VN7600

Features and Advantages

The CAN Driver for DIAdem accesses the CAN signals exclusively via symbolic names. The CAN raw data is converted automatically into physical values using conversion rules from the database (CANdb++). If the CAN bus configuration is changed (for example bit position, conversion rule) all that is required is to edit the database. The references in the DIAdem measurement structure can be updated automatically.

Functions

The CAN Driver for DIAdem supports the simultaneous use of up to four CAN channels. Other Vector CAN tools and applications that have been created with the Vector XL-Driver-Library can be used at the same time and on the same channels.

In addition, two virtual CAN channels are available for tests without hardware.

Application Areas

The CAN Driver for DIAdem can be used in all phases of the development and production of vehicles, where measurement data accumulates that must be analyzed and compared and presented together with the results in meaningful reports.

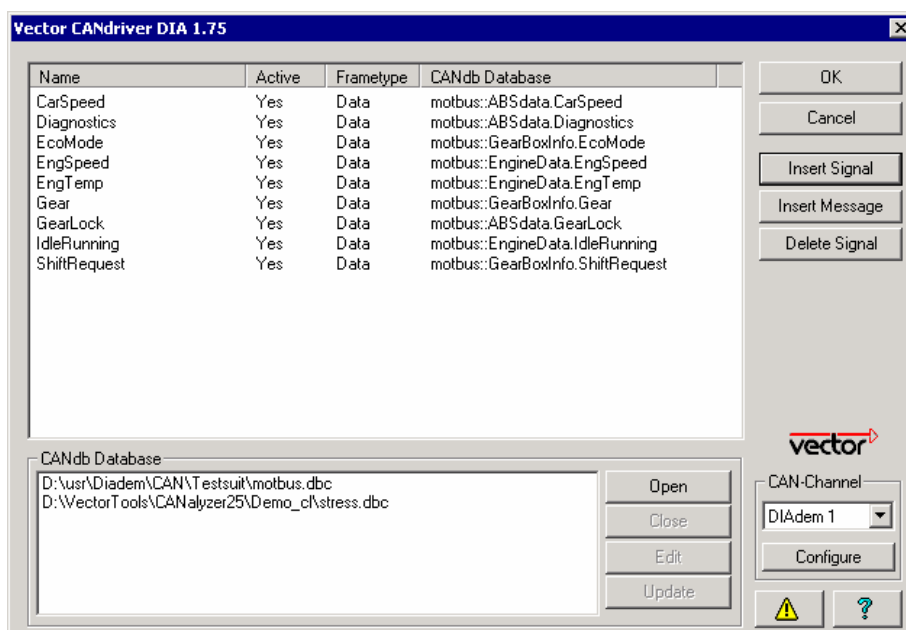
Requirements

- > DIAdem Version 10.2 or later (32 bit)
- > CAN hardware interface with DDM option (can be added later)
- > Vector driver for CAN hardware version 6.0 or higher

Included with Delivery

- > DLL driver for DIAdem
- > Database editor for creating and modifying CANalyzer databases.

DIAdem is a measurement system by National Instruments.



CAN Driver for DIAdem: Access to CAN Signals via Symbolic Names